

EDEN MIDCALF  
— SALES & LETTINGS —

£229,950  
Dog Lane

Bewdley, DY12 2EF

## PROPERTY SUMMARY

An ideal opportunity for a rental, holiday or second home, Swan Cottage is a charming Grade II listed two bedroom cottage enjoying a stunning outlook, directly onto the River Severn in Bewdley. Just a short walk from town amenities, it offers a well proportioned and attractively appointed layout, which retains much of its original character, but also benefits from modern appointments and includes two good sized bedrooms.

2



1



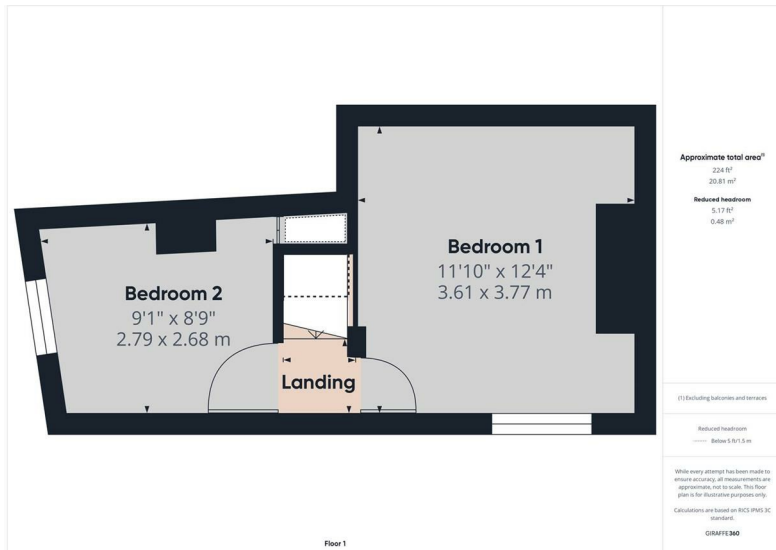
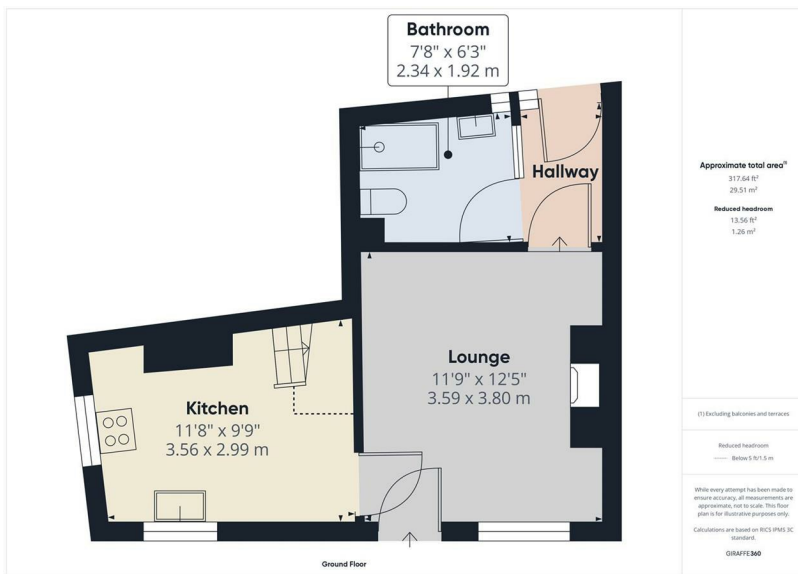
1









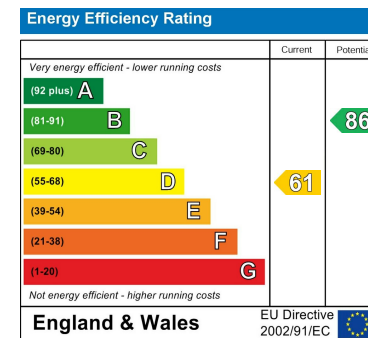


**LOCAL AUTHORITY**  
Wyre Forest District Council

**TENURE**  
Freehold

**COUNCIL TAX BAND**  
C

**VIEWINGS**  
By prior appointment only



Agents Note: Whilst every care has been taken to prepare these particulars, they are for guidance purposes only. All measurements are approximate and are for general guidance purposes only and whilst every care has been taken to ensure their accuracy, they should not be relied upon and potential buyers/tenants are advised to recheck the measurements

**EDEN MIDCALF**  
SALES & LETTINGS

5 Load Street  
Bewdley  
DY12 2AF

01299 402392  
wyreforest@edenmidcalf.co.uk  
<https://www.edenmidcalf.co.uk/contact-us/>